



Standard RF Shield Prototype Kits In stock and ready-to-ship!

PRODUCT FEATURES

- Variable shield heights of 0.25" (6.35mm), 0.50" (12.7mm) or 0.75" (19.05mm)
- Quick & easy shielding solution; Shields are ready to order; no tooling needed
- Brass material with tin plating offers excellent shielding and solderability characteristics
- No pre-set through-pins to interfere with custom boards
- Easy form-by-hand bend lines assist creating formed shield --No tooling required!

MATERIAL SPECS

- 0.015" (0.381mm) brass CDA 26000 ½ hard
- Finish: Bright tin plate (per Mil-T-10727, Type I Bright)
- Dimensions are outside (formed) dimensions
- Fotofab standard shields are RoHS compliant
- Made in the USA with materials produced in the USA



PRODUCT NOTES

- Parts are designed to be formed by hand without the use of tools.
- To create a wall height of 0.50" or 0.25" simply break away each 0.25" section by bending wall back and forth at the bend line
- Create 90° bend by forming shield wall into the lid so that bend line remains on the inside of shield

We offer the kits in two sizes please contact us for pricing. To order, please send PO to orders@fotofab.com

Information furnished by Fotofab is believed to be accurate and reliable. However, no responsibility is assumed by Fotofab for its use, nor any infringements of patents or other rights of third parties that may result from its use. Specifications subject to change without notice.

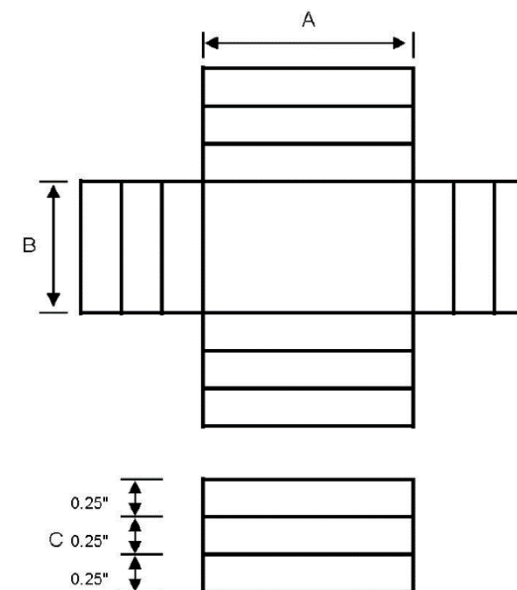


Prototype Kit: Standard Size Shields

P/N: Prototype Kit, Standard

Prototype Kit, Standard					
Dimensions: in (mm)					
Quantity per kit	A		B		C
2	0.500	(12.70)	0.500	(12.70)	Select from: 0.25 (6.35), 0.50 (12.70), or 0.75 (19.05)
2	0.500	(12.70)	0.750	(19.05)	Select from: 0.25 (6.35), 0.50 (12.70), or 0.75 (19.05)
2	0.500	(12.70)	1.000	(25.40)	Select from: 0.25 (6.35), 0.50 (12.70), or 0.75 (19.05)
2	0.750	(19.05)	0.750	(19.05)	Select from: 0.25 (6.35), 0.50 (12.70), or 0.75 (19.05)
2	0.750	(19.05)	1.125	(28.58)	Select from: 0.25 (6.35), 0.50 (12.70), or 0.75 (19.05)
4	0.750	(19.05)	1.500	(38.10)	Select from: 0.25 (6.35), 0.50 (12.70), or 0.75 (19.05)
2	1.000	(25.40)	1.000	(25.40)	Select from: 0.25 (6.35), 0.50 (12.70), or 0.75 (19.05)
2	1.000	(25.40)	1.500	(38.10)	Select from: 0.25 (6.35), 0.50 (12.70), or 0.75 (19.05)
2	1.000	(25.40)	2.000	(50.80)	Select from: 0.25 (6.35), 0.50 (12.70), or 0.75 (19.05)
1	1.500	(38.10)	1.500	(38.10)	Select from: 0.25 (6.35), 0.50 (12.70), or 0.75 (19.05)
1	1.500	(38.10)	2.250	(57.15)	Select from: 0.25 (6.35), 0.50 (12.70), or 0.75 (19.05)
1	1.500	(38.10)	3.000	(76.20)	Select from: 0.25 (6.35), 0.50 (12.70), or 0.75 (19.05)
1	2.000	(50.80)	2.000	(50.80)	Select from: 0.25 (6.35), 0.50 (12.70), or 0.75 (19.05)
1	2.000	(50.80)	3.000	(76.20)	Select from: 0.25 (6.35), 0.50 (12.70), or 0.75 (19.05)
1	2.000	(50.80)	4.000	(101.60)	Select from: 0.25 (6.35), 0.50 (12.70), or 0.75 (19.05)
1	2.500	(63.50)	2.500	(63.50)	Select from: 0.25 (6.35), 0.50 (12.70), or 0.75 (19.05)
1	2.500	(63.50)	3.750	(95.25)	Select from: 0.25 (6.35), 0.50 (12.70), or 0.75 (19.05)
1	2.500	(63.50)	5.000	(127.00)	Select from: 0.25 (6.35), 0.50 (12.70), or 0.75 (19.05)

Kit includes 29 shields total.



Each 0.025" section can be easily broken away to
Create shield heights of 0.25", 0.50", or 0.75"



Information furnished by Fotofab is believed to be accurate and reliable. However, no responsibility is assumed by Fotofab for its use, nor any infringements of patents or other rights of third parties that may result from its use. Specifications subject to change without notice.

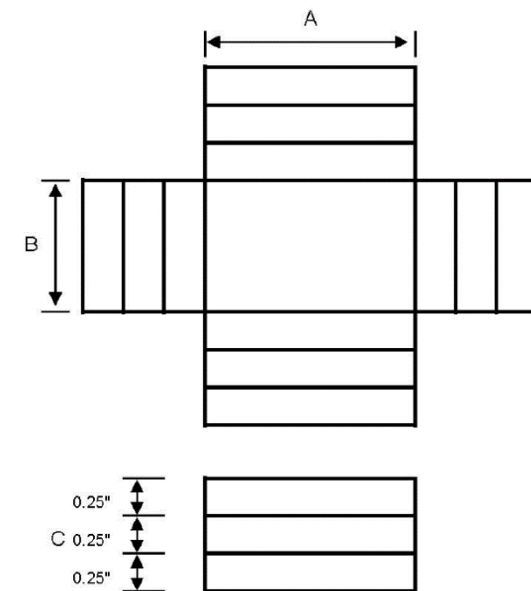


Prototype Kit: Small Size Shields

P/N: Prototype Kit, Small

Prototype Kit, Small					
Dimensions: in (mm)					
Quantity per kit	A		B		C
3	0.500	(12.70)	0.500	(12.70)	Select from: 0.25 (6.35), 0.50 (12.70), or 0.75 (19.05)
3	0.500	(12.70)	0.750	(19.05)	Select from: 0.25 (6.35), 0.50 (12.70), or 0.75 (19.05)
3	0.500	(12.70)	1.000	(25.40)	Select from: 0.25 (6.35), 0.50 (12.70), or 0.75 (19.05)
2	0.750	(19.05)	0.750	(19.05)	Select from: 0.25 (6.35), 0.50 (12.70), or 0.75 (19.05)
3	0.750	(19.05)	1.125	(28.58)	Select from: 0.25 (6.35), 0.50 (12.70), or 0.75 (19.05)
2	0.750	(19.05)	1.500	(38.10)	Select from: 0.25 (6.35), 0.50 (12.70), or 0.75 (19.05)
2	1.000	(25.40)	1.000	(25.40)	Select from: 0.25 (6.35), 0.50 (12.70), or 0.75 (19.05)
2	1.000	(25.40)	1.500	(38.10)	Select from: 0.25 (6.35), 0.50 (12.70), or 0.75 (19.05)
2	1.500	(38.10)	3.000	(76.20)	Select from: 0.25 (6.35), 0.50 (12.70), or 0.75 (19.05)
4	1.000	(25.40)	1.333	(33.86)	Select from: 0.25 (6.35), 0.50 (12.70), or 0.75 (19.05)
4	0.600	(15.24)	0.900	(22.86)	Select from: 0.25 (6.35), 0.50 (12.70), or 0.75 (19.05)
4	0.400	(10.16)	0.400	(10.16)	Select from: 0.25 (6.35), 0.50 (12.70), or 0.75 (19.05)
4	0.600	(15.24)	0.600	(15.24)	Select from: 0.25 (6.35), 0.50 (12.70), or 0.75 (19.05)
4	0.500	(12.70)	1.333	(33.86)	Select from: 0.25 (6.35), 0.50 (12.70), or 0.75 (19.05)
4	0.750	(19.05)	1.333	(33.86)	Select from: 0.25 (6.35), 0.50 (12.70), or 0.75 (19.05)

Kit includes 46 shields total.



Each 0.025" section can be easily broken away to
Create shield heights of 0.25", 0.50", or 0.75"



Information furnished by Fotofab is believed to be accurate and reliable. However, no responsibility is assumed by Fotofab for its use, nor any infringements of patents or other rights of third parties that may result from its use. Specifications subject to change without notice.